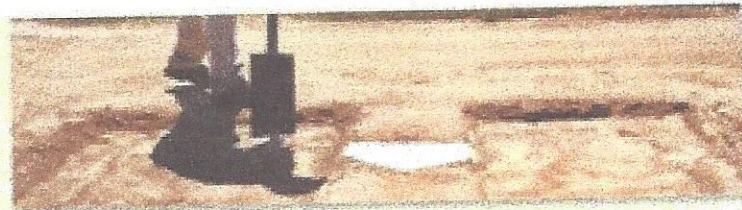




250 W. Adams Street Waterman, IL 60556-0218  
Phone: 815-264-3322 Toll Free: 800-833-2290  
Fax: 815-264-3324 www.MTP78.com

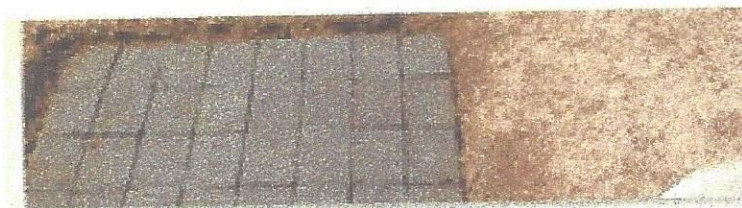
## PROMOUND BRICKS



**Step 1:** Remove top 3-4" of top soil.



**Step 2:** Install by lining bricks up edge to edge.



**Step 3:** Water and allow to soak for 1-2 hours.



**Step 4:** Cover with infield mix, tamp and finish with Pro's Choice soil conditioner.