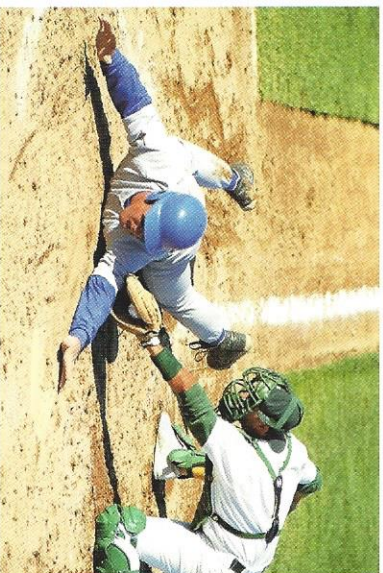


When the rain stops be ready to play! **Game-On** is the ideal solution for conditioning both skinned infields and sports turf. Game-On will allow your field to dry faster than you ever thought possible and keep your turf beautiful and healthy.

Keeping your skinned infield in shape is just as important as keeping your players in shape. Taking a hit from a bad hop from a compacted field can quickly take the fun out of competition. Game-On particles reduce compaction on skinned infield surfaces. This prevents the infield from becoming a hard, compacted playing surface that can cause bad hops.

Additionally, your infield surface will provide surer footing, helping to reduce player injuries. An infield containing Game-On provides better porosity and air space which keeps your infield from becoming unplayable and rock hard. Daily and annual maintenance is significantly reduced, saving money for other projects.

Game-On is specifically manufactured for its unique features. Each Game-On particle contains thousands of tiny pores



that wick excess water away from soil and turf. Game-On is produced by expanding and vitrifying selected shale in a rotary kiln at temperatures in excess of 2000°F. This process makes Game-On sterile and environmentally inert. It is not a chemical. It is a natural, non-toxic, highly absorptive ceramic granule with a generally neutral pH. The material is dimensionally stable and will not degrade or compress like other sports field conditioners. Game-On is safe for the field and safe for the players. Game-On becomes a permanent part of the field and does not need to be re-applied year after year.



Game-On keeps your sports turf looking great. The porous, cellular nature of Game-On helps manage water and fertilizer use, reduces compaction, increases soil porosity, maintains soil temperature, and reduces the loss of nutrients through leaching. Game-On absorbs water and soluble nutrients during “wet” times, and releases them when the soil begins to dry. It also helps maintain aeration and provides an environment suitable for beneficial microbial action. Problems of soil compaction are significantly reduced when Game-On is properly proportioned within the soil. The soil remains resilient because moisture and air movement are not restricted. Game-On provides the optimum condition for fast, healthy plant growth.

Game-On provides an excellent environment for healthy root structure. The porous micro-surface texture and interior porous structure resist clogging and provides superior aeration that promotes growth of delicate, fine root systems. Game-On retains as much as 20% of its weight in

absorbed water and water-borne nutrients. This sponge-like characteristic allows water and nutrients to be steadily released as the soil dries. This creates a buffer to help protect plant life from high concentrations of chemicals and persistent drought, and prevents soil cracking and crusting. **Game-On sets a new standard in sports field conditioning for skinned infields and sports turf. Manufactured from expanded shale, Game-On is tough and durable. It will stand up to hard play and weather, and will not break down with long-term exposure to water. Due to its unique composition, Game-On needs no special protection and may be stored outside.**

Martenson Turf Products Inc

800-833-2290

Game-On Regular



Game-On Red