

Emergent Shoreline Mixture

Technical Sheet

<u>Species</u>	<u>lb. per acre</u>
Acorus calamus (sweet flag)	0.125
Agrostis alba (redtop)	1.5
Alisma trivale (water plantain)	0.25
Eleocharis palustris (spike rush)	0.375
Iris virginica (blue flag)	0.125
Juncus effusus (common rush)	0.125
Lycopus americanus (water horehound)	1.0
Polygonum pennsylvanicum (pink weed)	1.5
Sagittaria latifolia (arrowhead)	0.125
Scripus validus (soft stem bulrush)	1.5
Sparganium eurycarpum (common bur reed)	0.375
Temp Cover Crop Mixture	<u>40.0</u>
MIXTURE TOTAL	47.0 lbs.

All mixtures are blended per order.

Pricing will always be quoted per acre; however, we can put together whatever amount you need.

If there are species within the mixture that you would like to substitute with different species, we can do that!

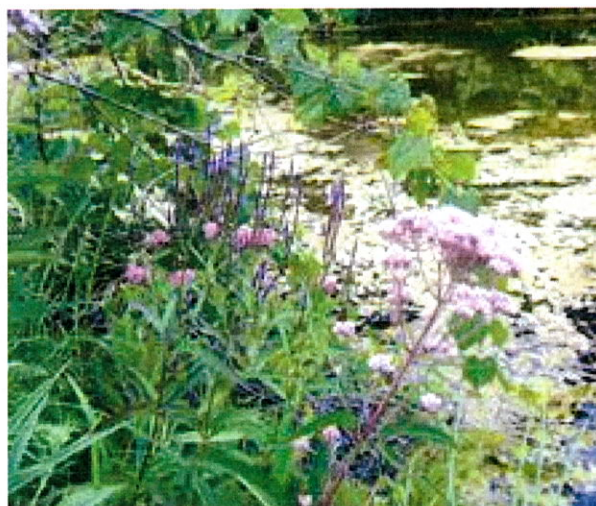
We can custom blend a mixture to your job specifications.

Custom mixtures are our specialty!

N
A
T
I
V
E

Note:

Due to ingredient product availability, substitution maybe necessary. Please keep in mind we will use equivalent to or better than cultivars.



M *Martenson*
Turf Products, Inc.

250 W. Adams Street
Waterman, IL 60556-0218
Phone: 815-264-3322
Fax: 815-264-3324
Toll Free: 800-833-2290
www.MTP78.com